

Alone

Garret Ballinger

A dark blue, solid-colored shape that starts as a thin line on the left edge and slopes upward diagonally to the right, ending at the top right corner of the slide. It occupies the lower half of the image.



A newly single guy figuring out how to live life alone.

The Story

One man's experience from being broken up with, learning how to cope with it, and being able to move on.

Tone

Explores the feelings attached to being left alone in a highly digitized online world where face to face interaction is at a minimum.

Setting



Ethan

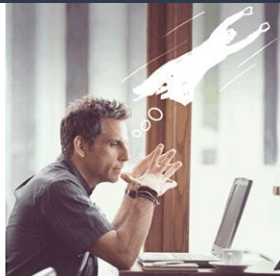
SOCIALLY AWKWARD

WALL FLOWER

NON-CONFRONTATIONAL

DREAMER

PARALYZED BY DECISION



DF-09872R

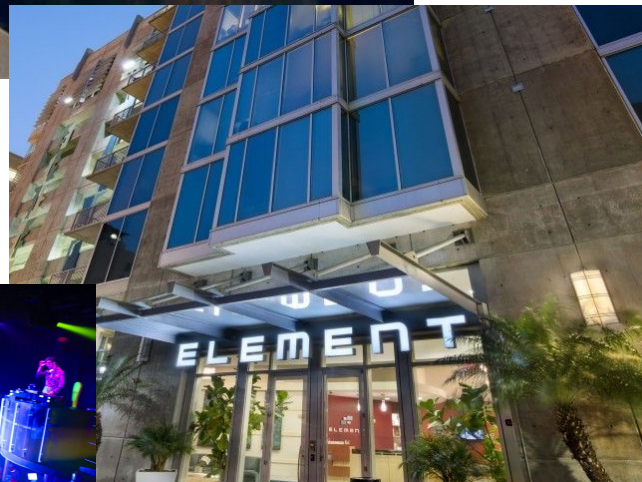
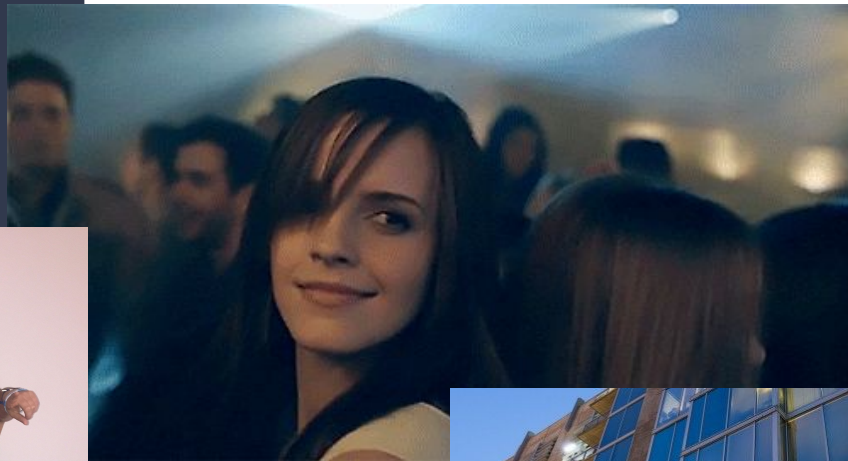
Photo credit: Wilson Webb

Walter Mitty (Ben Stiller) imagines himself as a fearless mountain climber who captures the attention of his co-worker Cheryl (Kristen Wiig).

TM & © 2013 Twentieth Century Fox Film Corporation. All rights reserved. Not for sale or duplication.

Lauren

LOUD
PROUD
RAMBUNCTIOUS
LIFE OF A PARTY



Matt

ETHAN'S ROOMMATE
PARTY GOER



Annette

ETHAN'S EX
BLONDE
EMOTIONALLY NEEDY
HAS BITCHY FRIENDS



Character Chemistry



1:15 - 2:05



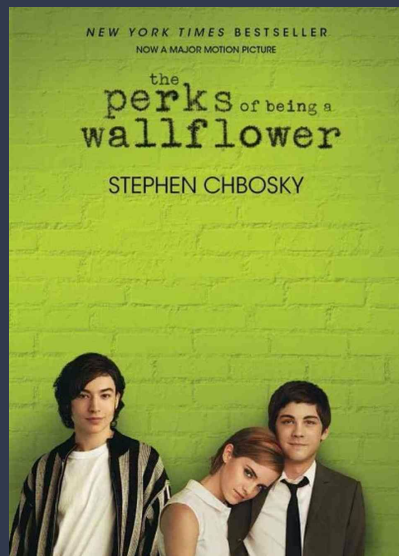
0:38-2:00

Imaginary to Reality



0:45 - 1:30

Comparable Works



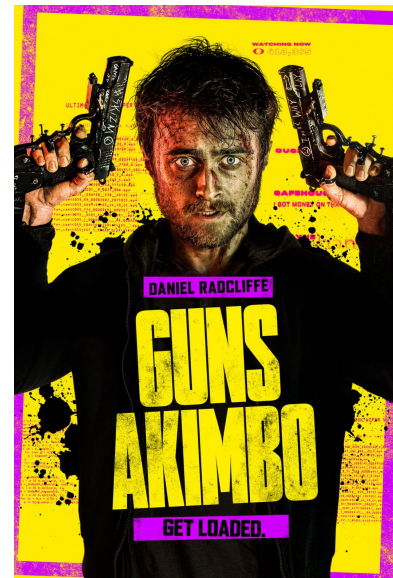
Protagonist Personality



Character Chemistry



Imaginary to Reality



Absurdist Comedy