



CHILDREN OF THE FOREST

AN EXPERIMENTAL NARRATIVE FILM

BY: EMILY DI BERNARDO

Welcome to the Forest

Story	Slide 3
Characters	Slides 4-12
Setting/Time	Slides 13-14
Mood/Tone	Slides 15-16
Music	Slides 17-18
Inspiration	Slides 19-22

SYNOPSIS

🐾 Two sisters are playing in the forest when they encounter three anthropomorphic animals. At each encounter, they participate in different activities and at the end of the day it's time for the sisters to head home. We discover the sisters have been dead the whole time and with the help of the “animals”, they have finally reached the afterlife.

CHARACTERS



THE CHILDREN: STELLA

- 🍀 Age 8
- 🍀 Vivian's older sister
- 🍀 Brave, outgoing, and strong willed



Download from
Dreamstime.com



THE CHILDREN: VIVIAN

- 🍀 Age 6
- 🍀 Stella's younger sister
- 🍀 Shy, carefree, and kind



shutterstock.com · 1101612335

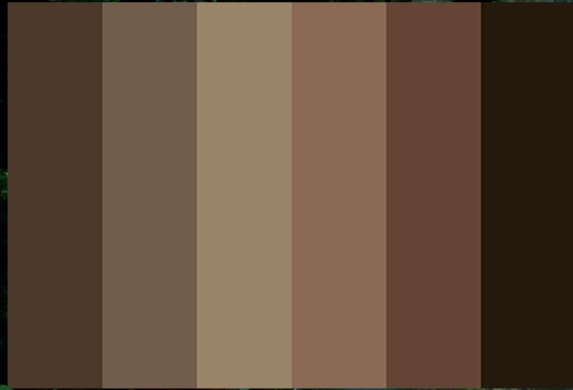


THE BEAR

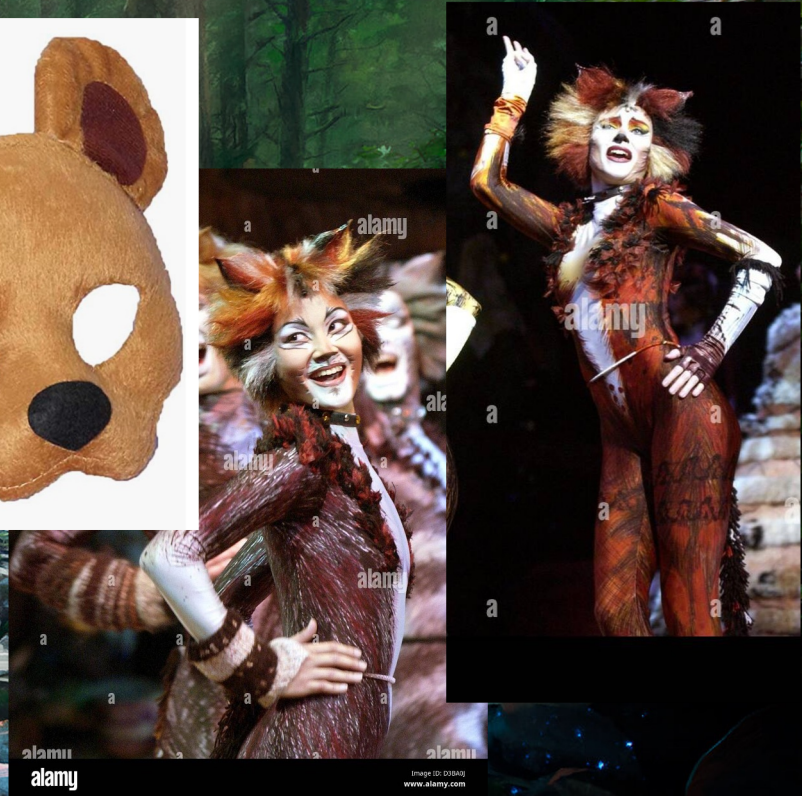
- ☞ A spirit disguised as a bear.
- ☞ Sleepy and peaceful
- ☞ Represents strength and courage
- ☞ Children are scared of it at first, but the bear comforts them and eventually they learn to trust it.



Costume



Color Palette

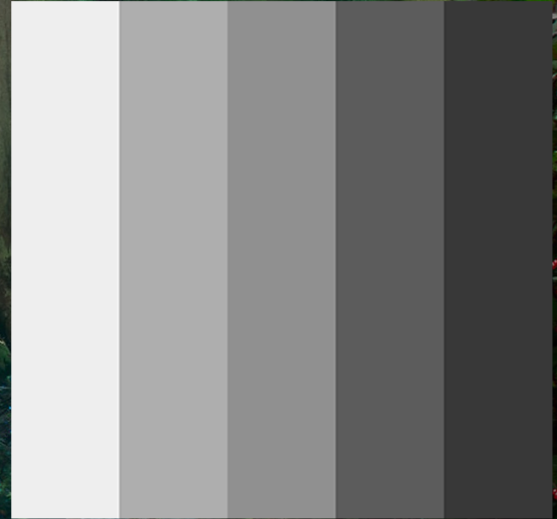


THE WOLF

- ☞ A spirit disguised as a wolf.
- ☞ Playful and cunning
- ☞ Represents freedom and playfulness
- ☞ Plays a game of hide-and-seek with the children



Costume



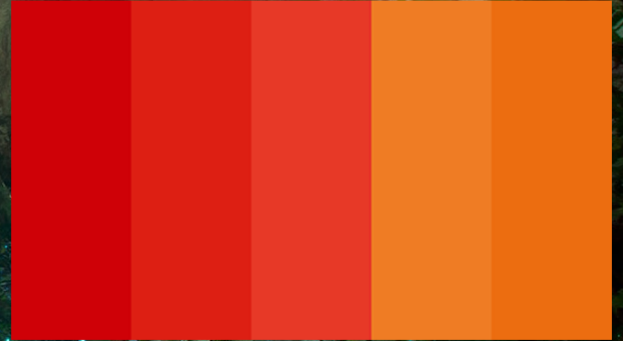
Color Palette

THE FOX

- ☞ A spirit disguised as a fox.
- ☞ Plays a sort of parental figure to the sisters.
- ☞ Represents spirituality and the afterlife
- ☞ Dances with the children as it guides them to their final resting spot.



Costume



Color Palette



Setting/Time



SETTING/TIME

- 🌿 The setting will be a forest or nature trail
- 🌿 The time in which the story will take place is unknown because the characters are in a place that defies time as we view it.



Mood/Tone



MOOD/TONE

- ☞ Tone: I want the film to feel surreal in that the audience has a hard time deciding if the events of the film are actually happening or not.
- ☞ Mood: The topic of death (especially with children) can be a scary and anxious thing, so I aim to portray these topics in more peaceful way to elicit a more positive emotion about the topic.

MUSIC



MUSIC

- 🌿 There is no dialogue in this film so having a good score will be very important. It will all be done from scratch with a mixture of live instrument and programmable recordings.
- 🌿 The score will consist of wind instruments (clarinet and flute), string instruments (guitar and koto), and the piano.
- 🌿 Each animal will also have their own song that plays when they are around.

MUSIC

Examples:

<https://www.youtube.com/watch?v=MzgMBrtrFc4&t=697s>

https://www.youtube.com/watch?v=_gf90k_3-xA

https://www.youtube.com/watch?v=U2_x4svbX_o

A lush, dark forest scene with a rocky stream flowing through the center. The water is clear, reflecting the surrounding greenery. Several glowing blue spheres are scattered throughout the scene, some resting on rocks and others floating in the air. The trees are tall and dense, with sunlight filtering through the canopy. The overall atmosphere is mystical and serene.

Inspiration

DIFFERENT CULTURES INTERPRETATIONS OF ANIMAL SYMBOLISM



In Native American tribes, the bear symbolizes strength, wisdom and courage



In Roman mythology, wolves are fearless and cunning



In Celtic lore, foxes take on the role of being spirit guides.

Demon Slayer: Kimetsu no Yaiba



Not only do some characters wear animal masks but there is also an arc where two children who have passed, help to train the main character.