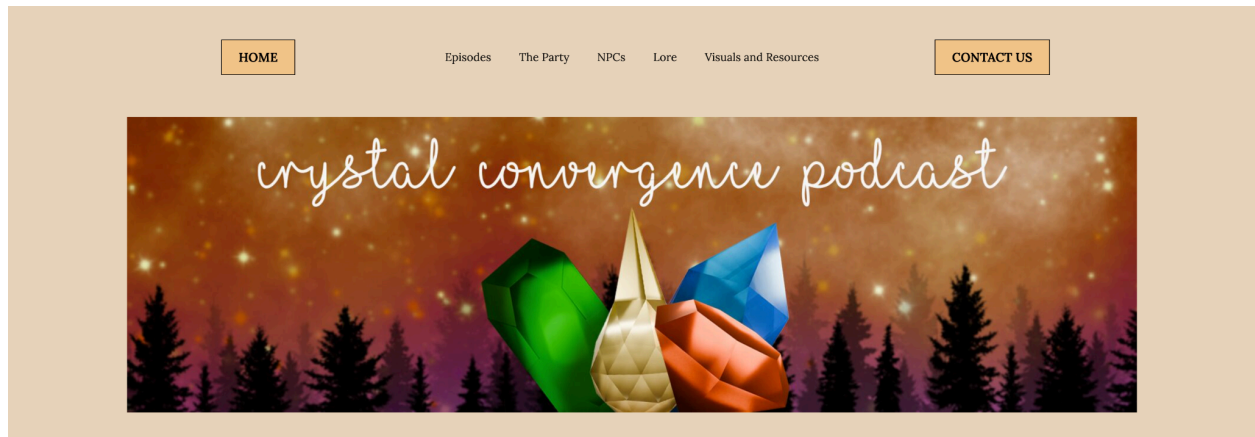


## Crystal Convergence Website Screenshots

### Link to View Full Website

<https://www.crystalconvergencepodcast.com/>

### Home Page



Welcome to

## Crystal Convergence Podcast

Join us on our cast's epic journey across Aetheria in our Dungeons and Dragons one shot podcast! In each episode, you'll delve into a world filled with powerful guardians, amazing destinations, and powerful magic.

Whether you're a seasoned adventurer or a newcomer to the world of D&D, our podcast

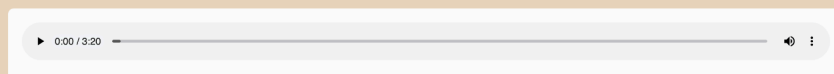
## Crystal Convergence Podcast

Join us on our cast's epic journey across Aetheria in our Dungeons and Dragons one shot podcast! In each episode, you'll delve into a world filled with powerful guardians, amazing destinations, and powerful magic.

Whether you're a seasoned adventurer or a newcomer to the world of D&D, our podcast promises excitement, intrigue, and plenty of critical hits!

All episodes are currently released under the 'Episodes' tab.

### Official Trailer



**Episodes Tab**



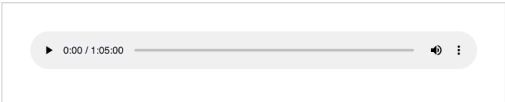
**Episode 1: Welcome to  
Amberglade**

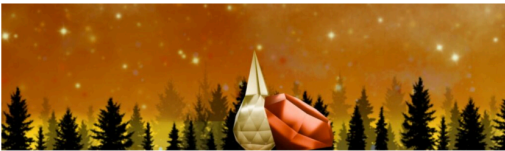
We meet the Party for the first time as they arrive in Amberglade for the Crystal Convergence ceremony. However, something seems off...



**Episode 2: The  
Crystal Caverns**

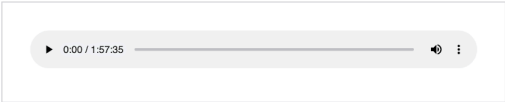
We join the party on their mission to find all of the lost crystals before the ceremony as they make their way to the Crystal Caverns.





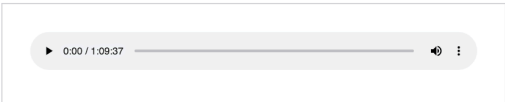
### Episode 3: OWLBEARS!?!

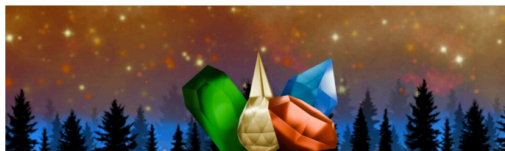
The Party gets pulled over by Owlbear cops on their way to Sunshore. How will the Party get out of this one?



### Episode 4: Flora Sanctum

The Party visits the Flora Sanctum in hopes of finding Daphne's crystal and are greeted with a puzzle.





## Episode 5: The Crystal Convergence

The Party challenges Yukio in a standoff to obtain the final crystal. Find out if the Crystal Convergence happens in the finale!

▶ 0:00 / 2:05:13 🔊 ⋮



## Bonus Episode: Bloopers

Three minutes and thirty seconds of pure shenanigans that were not included in the episode cuts.

▶ 0:00 / 3:30 🔊 ⋮



# The Party Tab

HOME

Episodes

The Party

NPCs

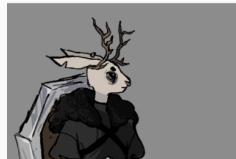
Lore

Visuals and Resources

CONTACT US



## Auricularia Elegans



## Auricularia Elegans

AKA "Auri"  
Harengon, Cleric

Serving as Queen Sienna's head cleric and funerary director, Auri is a very talented mortician. After joining the war and fighting alongside King Russet until the very end, Auri now keeps his grave maintained. While ensuring King Russet rests peacefully, he also helps Queen Sienna mourn the loss of her husband, as well as assist in any daily tasks that need to be done.





## Bruiser

AKA ???  
Minotaur, Barbarian

Who am I? What am I? AM I A FAIRY? Are all questions Bruiser has after waking up in a bar in Amberglade. With severe amnesia and a few bruises on his body (haha get it?), Bruiser seeks to find out who he is while consuming as much alcohol as he can in the process.

## Flicker of a Candle Flame

AKA "Flicker"  
Dragonborn, Wizard

After being hatched out of an egg by his mentor Heimal, Flicker is now a free dragon, ready to explore the world outside of Frostpeak Jail. He carries with him a letter, written by his mentor, describing the immense power that the guardians hold. We join Flicker on his journey, seeking everything there is to know about magic in Aetheria.



## Yewlian Morrow



# Yewlian Morrow

AKA "Yewlian" or maybe "Nailwey?!"  
Human, Bard



After it was announced that the Crystal Convergence ceremony would be taking place for the first time in Amberglade, Yewlian was sent out to cater the event. His Frostpeak style pot pies have quickly become Queen Sienna and Wiggle's favorites, ordering them every day since he has arrived. All seems normal in Yewlian's world, until he comes across a strange wanted poster for someone who looks just like him named Nailwey...Who is this doppelganger?



## NPCs Tab

HOME

Episodes

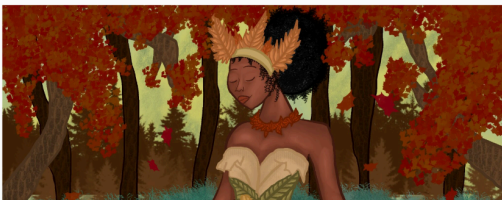
The Party

NPCs

Lore

Visuals and Resources

CONTACT US

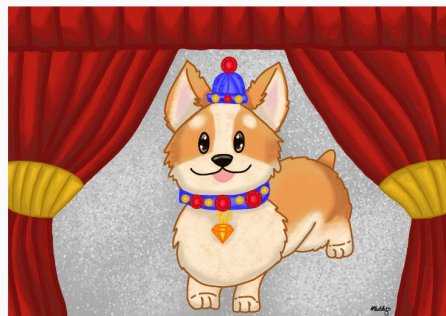




## Queen Sienna

Fairy Queen of Amberglade

A kind and graceful Queen. Although she does not have wings anymore like the other fairies of Amberglade, she still can get around using her flying chariot. After her husband King Russet's death, Queen Sienna worked hard to rebuild Amberglade and prepare for the Crystal Convergence. Primarily, she protects the fairies of Amberglade with Wiggle and Auri by her side.



## Sir Wigglebottoms Maple Syrup

AKA "Wiggle"  
Guardian of the Autumn Sector

The most energetic corgi you will ever meet. Queen Sienna's right hand pup. Loves to chew on the Queen of Blossomvale's socks. Just a silly little guy who loves pot pies!



## Sir Dune

AKA "Dune"  
Guardian of the Summer Sector

Duuudddeeeeee! Dune is the coolest golden retriever around! He loves to surf and hang out with Ryder in the Surf Shack. You can always find him on the beaches of Sunshore, catching waves and taking siestas.

---



## Lady Daphne

AKA "Daphne"  
Guardian of the Spring Sector

The uptight Guardian of the group. Daphne is one dachshund that loves to be pampered! Although she can seem rude at times, she means well, and always keeps the other Guardians in check. She takes pride and responsibility in her duties.



## Sir Yukio

AKA "Yukio"  
Guardian of the Winter Sector

A cold-hearted shiba inu. Seeks revenge for King Bylur's death and just wants him back. Will do anything to have his owner back in the land of the living, even if it means stealing his friends crystals.

## Visuals, Resources, and Lore Tab

[HOME](#)[Episodes](#)[The Party](#)[NPCs](#)[Visuals, Resources, and Lore](#)[CONTACT US](#)

### Episode 1

Fengshu Jui  
Pon-owa Yee

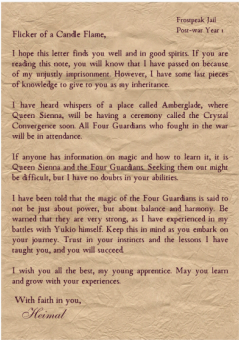
Flicker of a Candle Flame,

I hope this letter finds you well and in good spirits. If you are reading this now, you will know that I have passed on because of my untimely demise. However, I have some bits pieces of knowledge to give to you as my inheritance.

Episode 1

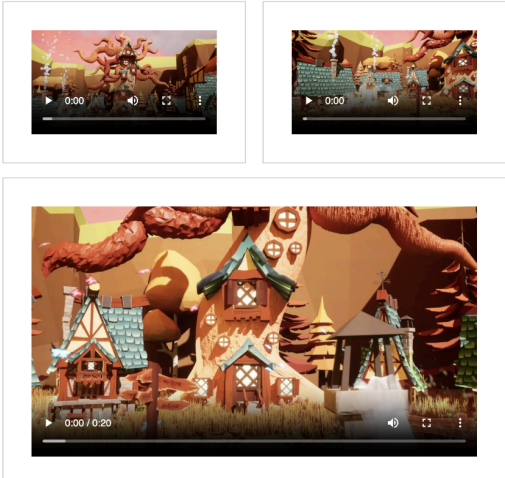
Flicker’s Note

A note to Flicker from his mentor,  
Heimal



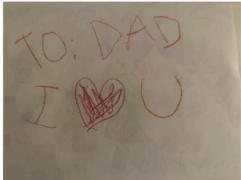
Amberglade

Visuals of Amberglade created with Unreal Engine 5



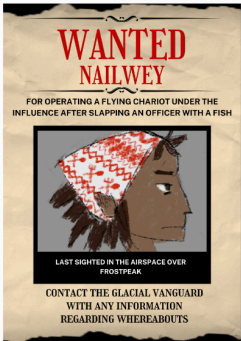
# Bruiser's Note

Found in his pocket when he arrived in Amberglade.

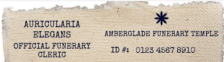


# Yewlian's (?) Wanted Poster

A wanted poster found in the bakery in  
Amberglade.



# Auri's ID Card

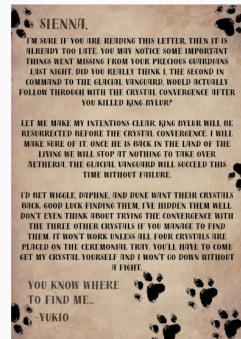




Used to get in and out of the funerary chamber. Also a questionable drivers license?



### A letter from Yukio to Queen Sienna

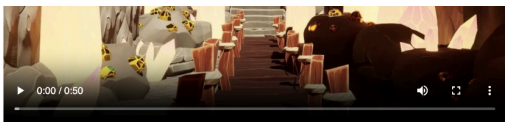
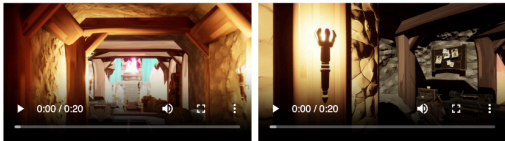


The circled map that Queen Sienna gives to the party



# Crystal Caverns

Visuals of the Crystal Caverns created with Unreal Engine 5



## Crystal Spider Battle Map

The battle map for when the Party fought the crystal spiders during the mirror puzzle



# Giant and Small Crystal Spider Monster Sheets

The sheets the DM used for the spider monsters made with D&D Beyond

|  |   |
|--|---|
| <div><div>CRYSTAL SPIDER</div><div>Tiny Beast, Undead</div><div>Armor Class 12</div><div>Hit Points 6 (1d4 + 1)</div><div>Speed 20 ft., climb 20 ft.</div><div>STRDEXCONINTWISCHA2 (4) 14 (1d2 + 3) 1 (1) 10 (d4) 2 (1d6)</div><div>Skillssleight +4</div><div>Senses Darkvision 30 ft., Passive Perception 10</div><div>Languages—</div><div>Challenge 0 (10 XP)</div><div>Proficiency Bonus +2</div></div> | <div><div>Spider Climb.</div><div>The spider can climb difficult surfaces, including upside down on ceilings, without needing to make an ability check.</div><div>Web Sense.</div><div>While in contact with a web, the spider knows the exact location of any other creature in contact with the same web.</div><div>Web Walks.</div><div>The spider ignores movement restrictions caused by webbing.</div><div>Actions</div><div> Bite.</div><div>Minor Weapon Attack.—4 to hit, reach 5 ft., one creature. Hit: 7 (d4 + 1) piercing damage, and the target must make a DC 11 Constitution saving throw, taking 2 (d4) poison damage on a failed save, or half as much damage on a successful one. If the poison damage reduces the target to 0 hit points, the target is stable but poisoned for 1 hour, even after regaining 0 points, and is paralyzed while poisoned in this way.</div><div>Web (Recharge 4d6).</div><div>Target Weapon Attack.—1 to hit, range 30/60 ft., one creature. Hit: The target is restrained by webbing. As an action, the restrained target can make a DC 10 Strength check, tearing the webbing on a success. The webbing can also be attacked and destroyed (AC 10, hp 5), vulnerability to fire damage, immunity to bludgeoning, poison, and psychic damage).</div></div> |
|--|---|



## Episode 3

### Owlbear Battle Map

The owlbear battle map- featuring the owlbears as sour cream and onion chips



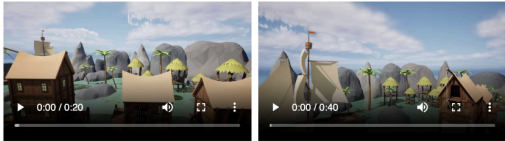
### Owlbear Monster Sheet

The monster sheet the DM used for the Owlbears

|   |   |
|---|---|
| <div><div>OWLBEAR</div><div>Large Monstrosity, Undead</div><div>Armor Class 13 (natural armor)</div><div>Hit Points 16 (2d10 + 1)</div><div>Speed 40 ft.</div><div>STRDEXCONINTWISCHA20 (1d12 + 3) 17 (d10) 1 (1d4) 12 (d8) 7 (1d6) 1 (1d6)</div><div>Skillssleight +3</div><div>Senses Darkvision 60 ft., Passive Perception 10</div><div>Languages—</div><div>Challenge 1 (200 XP)</div><div>Proficiency Bonus +2</div></div> | <div><div>Blind Sight and Smell.</div><div>The owlbear has advantage on Wisdom (Perception) checks that rely on sight or smell.</div><div>Actions</div><div>Unearthed.</div><div>The owlbear makes two attacks once with its beak and one with its claws.</div><div>Beak.</div><div>Minor Weapon Attack.—7 to hit, reach 5 ft., one creature. Hit: 10 (d10 + 3) piercing damage.</div><div>Claw.</div><div>Minor Weapon Attack.—7 to hit, reach 5 ft., one target. Hit: 10 (d10 + 3) slashing damage.</div></div> |
|---|---|

# Sunshore

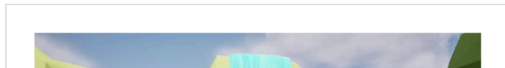
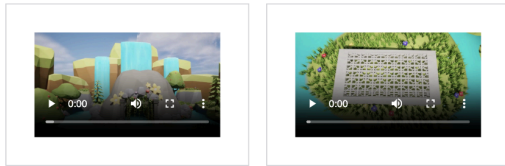
Visuals of Sunshore created using Unreal Engine 5



# Episode 4

## Flora Sanctum

Visuals for the Flora Sanctum created with Unreal Engine 5





## Flower Puzzle

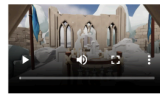
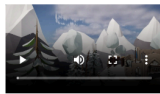
The DM's guide to the Flower Puzzle outside of the Flora Sanctum- tiles indicated with VF represented the wrong tiles and violet funguses would have popped out, however, the party only stepped on the correct ones.



## Episode 5

### Temple of the Lost King

Visuals for the Temple of the Lost King created with Unreal Engine 5



The final boss battle map for when the Party fought Yukio



## Yukio's Monster Sheet

The monster sheet created for Yukio using D&D Beyond's Homebrew. The DM learned that Ice Storm is a very powerful spell.

[illegible]

## Contact Us Tab

HOME

Episodes

The Party

NPCs

Visuals, Resources, and Lore

CONTACT US



### Questions, Comments, Concerns?

We would love to hear from you!

### Questions, Comments, Concerns?

We would love to hear from you!



Send us an email at [crystalconvergencepodcast@outlook.com](mailto:crystalconvergencepodcast@outlook.com)

We look forward to hearing from you soon!

